



ARCHITECTURAL & ENGINEERING SPECIFICATION

Complete manual hand washing system includes 20"x18" vitreous china wall hung lavatory with Z81104-XL-3M polished chrome plated cast brass faucet with a 0.5 gpm aerator, Z8743-PC chrome plated cast brass solid top grid strainer, Z8700-8B-PC series P-trap, and Z8804-XL-LR-LK-PC series supply stop kit.

PRODUCT FEATURES

- 20" [508 mm] x 18" [457 mm] vitreous china lavatory
- Wall hung lavatory provided with wall hanger bracket
- or for use with concealed arm carrier systems
- Front overflow
- Chrome-plated Cast Brass faucet body
- Quarter turn ceramic disk faucet operation
- 3/12" centerline rigid or swing gooseneck spout
- 4" wristblade handles
- Complete commercial grade grid drain, P-Trap, supply stops and supply kit.
- Z8946-3-NT Trap Wrap

COMPLIANCE AND CERTIFICATION:

Meets the American Disabilities Guidelines and ANSI A117.1 requirements when installed according to these requirements.

- Fixture - Complies with ASME A112.19.2 / CSA B45.1
- Faucet - Complies with ASME A112.18.1 / CSA B125.1



This product should be used with a WaterSense labeled counterpart with a compatible flow volume to ensure that the entire system meets the requirements for water efficiency and performance.



ZURN ONE SYSTEM PACKOUT INCLUDES:

LAVATORY - Z5344:

20" [508mm] x 18" [457mm] vitreous china wall hung lavatory with 4" [101mm] center faucet holes. Provided with hanger plate and holes for concealed arm carrier system

FAUCET - Z81104-XL-3M:

Polished chrome-plated cast brass faucet body with integral shanks, quarter turn ceramic disc cartridges and a 4" long integral cast spout with a 0.5 gpm vandal-resistant pressure compensation aerator

Z8746-PC:

Chrome-plated cast brass solid top, open grid, P.O. plug. Furnished with 5" [127mm] long, chrome-plated brass 17 gauge tailpiece and chrome-plated cast brass locknut

Z8700-8B-PC:

Chrome-plated, cast body P-trap less clean-out, tubular wall bend, die cast nuts, and shallow escutcheon with compression inlet

Z8946-3-NT:

ZURN Z8946-3-NT Combination Kit: One trap protector, two supply stop protectors and one offset drain protector, satin white PVC resin, ZurnSHIELDTM, resists thermal transfer and is ADA compliant. Trap protector fits both tubular and semi-cast P traps.

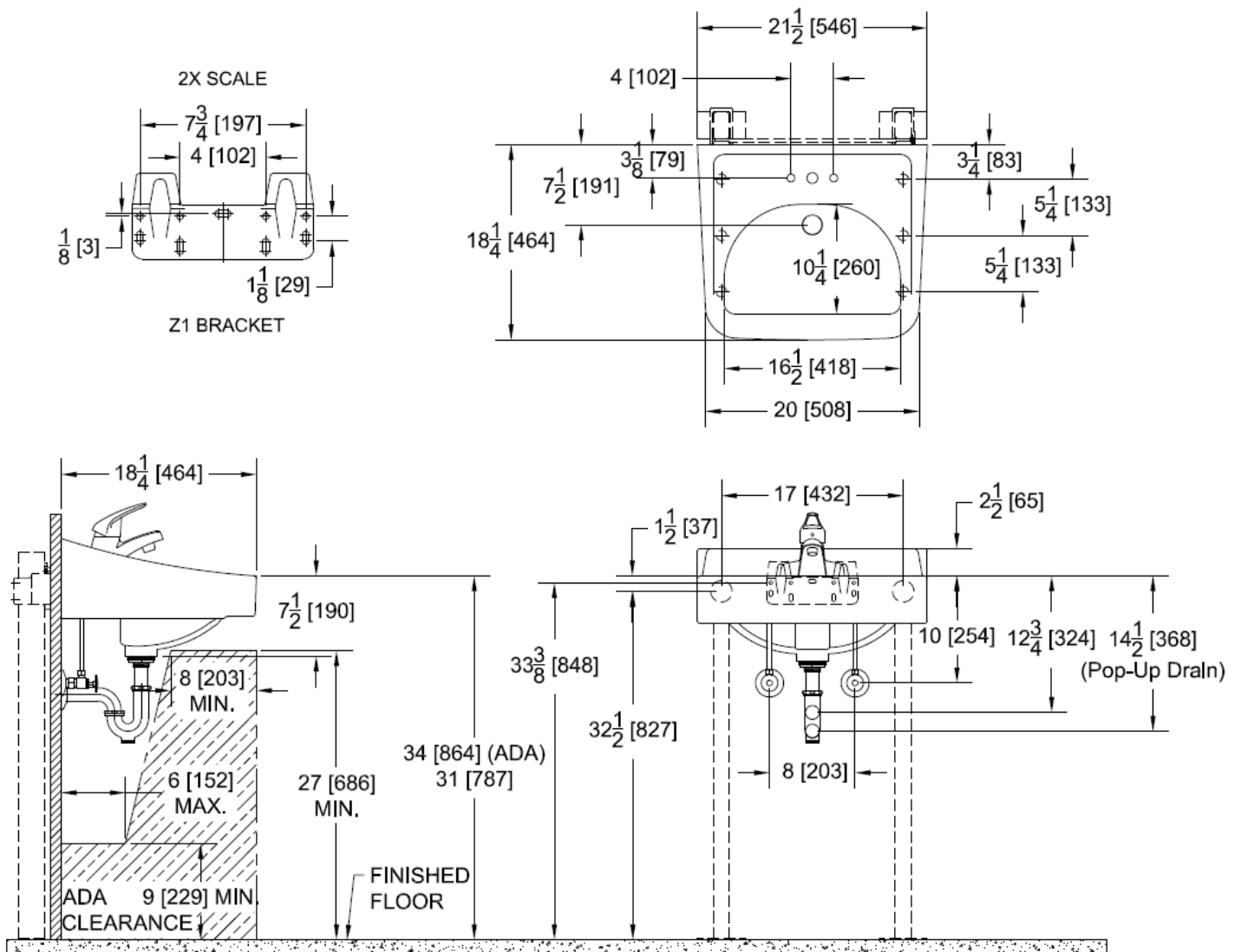
Z8802-XL-LR-LK-PC:

Two chrome-plated, solid brass angle stops with 1/2" [13mm] NOM compression inlet, 3/8" [10mm] OD compression outlet, loose key, two 12" [305mm] flexible chrome-plated copper lavatory risers complete with two chrome-plated steel flanges and 5" [127mm] chrome-plated copper extension tubes, deep bell steel flanges

ARCHITECTURAL & ENGINEERING APPROVAL

The information contained in this document is subject to change without notice. Please contact Zurn for most up to date information.

Rough-in/Overview dimensions





Z1231EZ

UNIVERSAL CONCEALED ARM CARRIER SYSTEM FOR WALL HUNG
LAVATORY W/ ADJUSTABLE UPRIGHTS & HEADER PLATES

SPECIFICATION SHEET

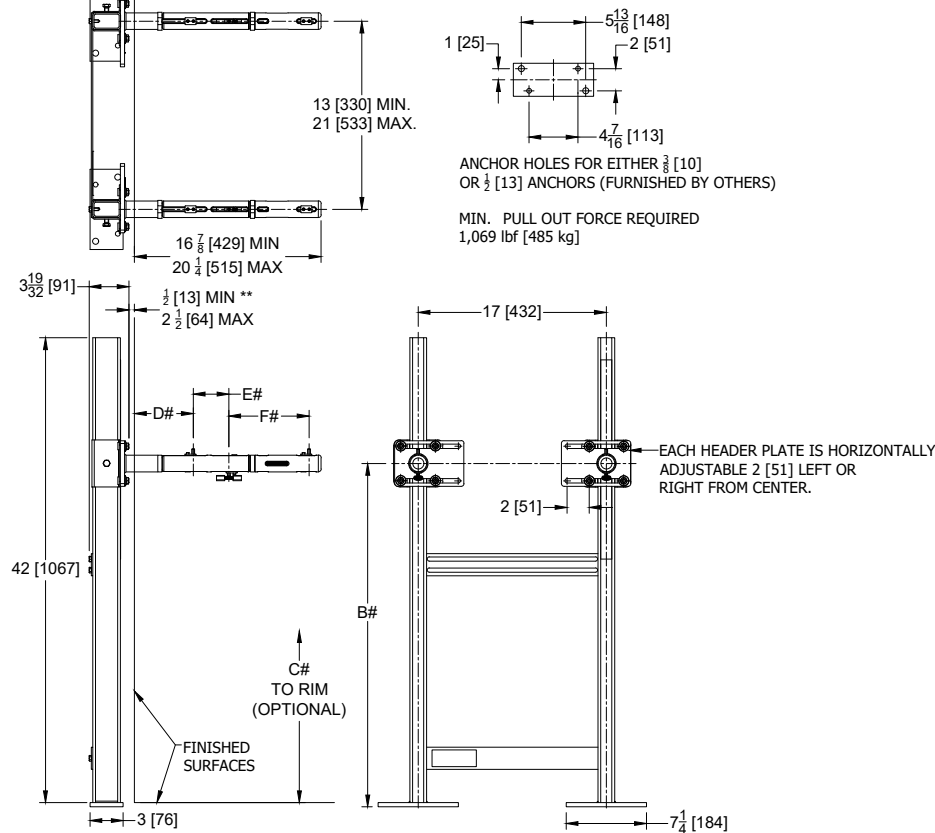
TAG _____

Design and Dimensional Data (inches and [mm]) are Subject to Manufacturing Tolerances and Change Without Notice

NOTES:

REFER TO ROUGH-IN GUIDE OF SPECIFIC FIXTURE FOR DIMENSIONS.

** WITH STANDARD SLEEVE LENGTH OF 3 [76].



Product No.	Approx. Wt. Lbs. [kg]
Z1231EZ	43 [19]

ENGINEERING SPECIFICATION: ZURN Z1231EZ

Z1231EZ Universal Carrier System designed to reduce installation time and provide job site flexibility. Zurn's Concealed Arm Carrier comes standard with Dura-Coated, ductile iron universal arms, including leveling screws, and soft-set elastomeric locking devices pre-installed. Reversible header plates with slots and integral welded arm sleeves that provide 2" [51mm] of horizontal adjustment per plate, allowing for horizontal post anchoring adjustment from 13"-21" [330 mm - 533 mm]. Uprights, rigid spacing plates, and header plates are factory assembled for easy installation. Carrier system comes complete with Dura-Coated uprights constructed of carbon-steel tubing that meet ASTM A500 Grade C standards. Uprights also include welded steel plate mounting feet that feature separate bolt patterns for use with either (2) 3/8" [10 mm] or 1/2" [13 mm] anchors per leg. Carrier includes lower and upper rigid spacing plates for a spacing of 17" [432 mm]. Upper spacing plate includes horizontal slots for securing water supply and vent piping. Zurn's Universal carrier systems exceeds load and deflection requirements when tested in accordance to ASME Standard A112.6.1M up to a 250 lb [113kg] static load rating at all rough-in positions, and meets OSHPD spacing requirements for two anchor per upright installation.

PREFIXES

___ Z Dura-Coated System with Support Plate

SUFFIXES

___ -AL Adapter Lug
___ -D Back to Back System
___ -EXT Extension Sleeve 3-5 [76-127]
___ -WL Waste Line Sleeve

⚠ **WARNING:** Cancer and Reproductive Harm - www.P65Warnings.ca.gov

⚠ **ADVERTENCIA:** Cáncer y daño reproductivo - www.P65Warnings.ca.gov

⚠ **AVERTISSEMENT:** Cancer et effets néfastes sur la reproduction - www.P65Warnings.ca.gov

Zurn Industries, LLC | Specification Drainage Operation
1801 Pittsburgh Avenue, Erie, PA 16502, Ph. 855.663.9876

In Canada | Zurn Industries Limited
7900 Goreway Drive, Unit 10, Brampton, Ontario L6T 5W6, Ph. 877.892.5216

www.zurn.com

Rev. C
Date: 12/30/22
C.N. No.144897
Patent zurn.com/patents
Prod. | Dwg. No. Z1231EZ



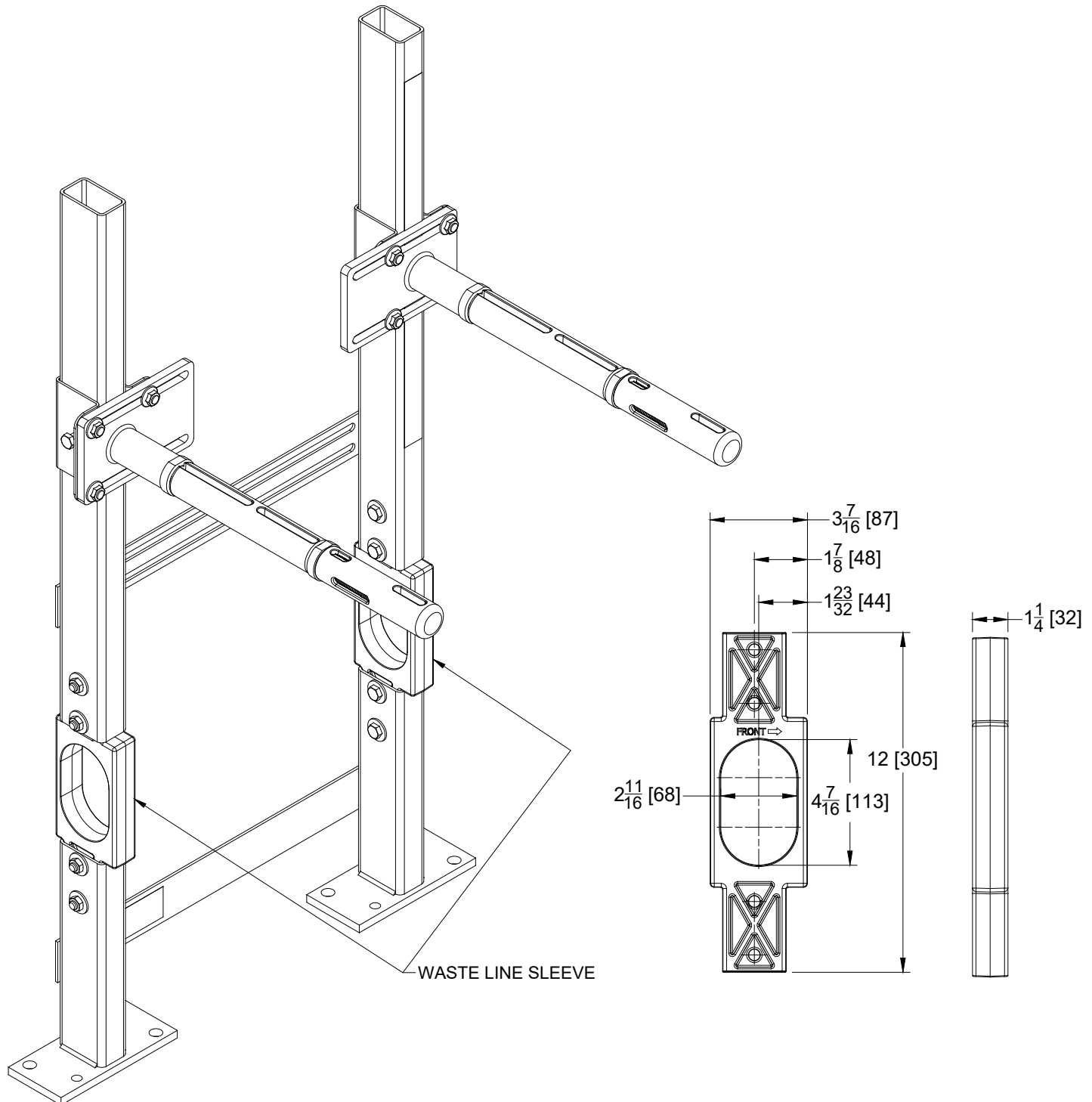
-WL Option for Z1231EZ

UNIVERSAL CONCEALED ARM CARRIER SYSTEM FOR WALL HUNG
LAVATORY W/ WASTE LINE SLEEVE

SPECIFICATION SHEET

TAG _____

Design and Dimensional Data (inches and [mm]) are Subject to Manufacturing Tolerances and Change Without Notice



ENGINEERING SPECIFICATION: ZURN Z1231EZ-WL

Dura-Coated cast iron waste line sleeve designed for use with Z1231EZ Lavatory Carrier. Complete with integral positive stops for proper assembly with mating uprights and securing hardware. Sleeve allows for up to a 2 [51] waste line to pass through while meeting the strength and deflection criteria of the carrier system, as required by ASME A112.6.1M.

Zurn Industries, LLC | Specification Drainage Operation
1801 Pittsburgh Avenue, Erie, PA 16502, Ph. 855.663.9876

In Canada | Zurn Industries Limited
7900 Goreway Drive, Unit 10, Brampton, Ontario L6T 5W6, Ph. 877.892.5216

www.zurn.com

Rev. A
Date: 12/30/22
C.N. No.144897
Patent zurn.com/patents
Prod. | Dwg. No. Z1231EZ-WL